

## MS-7TPH4233PA-M

Explosion-Proof Bispectral +IR PTZ Camera  
with Motorized Thermal Lens



### Key Features

- Uncooled VOx Micro bolometer with 400×300 resolution
- 25/50 mm motorized lens optional, 30x optical zoom
- Sensitivity  $\leq 40\text{mK}$
- Support temperature monitoring exception alarm
- Support 3 temperature measurement rule types (point, line, polygon)
- Support human and vehicle detection
- Intelligent analysis: intrusion, single line crossing, double line crossing, loitering, wrong-way, people counting, enter area, leave area
- 17 color control
- IP68

## Specification

Thermal Camera		
Detector Type	Uncooled VOx Micro bolometer 400×300	
Resolution	Sensor is 400×300. Image can be scaled up to 704×576	
Pixel size	17μm	
Spectral Range	8-14μm	
Thermal Sensitivity (NETD)	≤ 40 mK	
Lens Type	Fixed	
Focus Control	Motorized Focus	
Focal Length	25 mm	50 mm
F No.	F1.0	F1.0
Angle of View	H:15.4°, V:11.6°	H: 7.7°, V:5.8°
Detection Distance Fire(1*1m)	735 m	1471 m
Detection Distance Man(1.8*0.5m)	735 m	1471 m
Detection Distance Vehicle(4*1.5m)	2255 m	4510 m
Recognition Distance Man(1.8*0.5m)	184 m	368 m
Recognition Distance Vehicle(4*1.5m)	564 m	1127 m
Visible Camera		
Image Sensor	1/2.8" Sony CMOS	
Max. Resolution	2592 (H)×1944 (V)	
Shutter Speed	1/1 ~ 1/30,000s	
Min. Illumination	Color: 0.07 Lux @ (F1.6, AGC ON), B/W: 0.02 Lux, 0 Lux with IR on	
S/N Ratio	More than 55 dB	
Focal Length	5.3 ~ 159mm	
Max Aperture	F1.6 ~ F4.3	
Angle of View	H: 55° ~ 2.3°, V: 41.6° ~ 1.7°	
Optical Zoom	30x	
Focus Control	Auto/Manual/Semi-automatic	
Mirror	Support	
Defog	Support	
Privacy Masking	Support	
Illumination Distance	IR distance up to 100m (328.08 ft)	
PTZ		
Pan/Tilt Range	Pan: 0° ~ 360° endless, Tilt: +90° ~ -90°	
Pan/Tilt Speed	Pan: 0.1° ~ 30°/s, Tilt: 0.1° ~ 20°/s	
Wiper	Support	
Preset Accuracy	± 0.2°	
Presets	400	
Scan	8 scans, up to 32 presets per scan	
Patrol	12 patrols, up to 32 presets per scan	
Track	6 tracks	
3D Positioning	Support	
Speed Setup	Auto/Manual (0-8)	
Power Off Memory	Support	
Idle Motion	It can activate Preset/ Scan/Tour/Pattern if there is no command in the specified period	

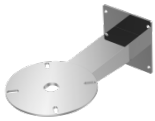
Video and Audio	
Main Stream	Visible: 2592×1944, 2592×1520, 1920×1080, 1280×720 @25/30fps Thermal: D1 @25/30fps
Sub Stream	Visible: D1, VGA, CIF @25/30fps Thermal: CIF @25/30fps
Bit Rate Control	CBR/VBR
Bit Rate	Visible: main stream: 200Kbps ~ 12Mbps, sub stream: 100Kbps ~ 6Mbps Thermal: main stream: 100Kbps ~ 6Mbps, sub stream: 10Kbps ~ 1.5Mbps
Region of Interest	Off / On (8 Zone, Rectangle)
Smart Encode	Support
Audio Compression	G.711: 8kbps, RAW_PCM: 16kbps
Temperature Detection	
Temperature Detection	Support 3 temperature measurement rule types (point, line, polygon)
Temperature Alarm	Temperature difference alarm, Threshold alarm, Temperature rise alarm
Accuracy	±2°C (35.6°F) / ±2%
Response Time	≤ 30ms
Temperature Range	-20°C ~ 150°C (-4°F ~ 302°F)
Smart Function	
Smart Alarm	Motion detection, I/O alarm, Disk alarm, IVS alarm, Temperature detection & alarm
Intelligent Functions	Temperature detection & alarm, Human detection, Vehicle detection
Intelligent Analysis	Intrusion, Single line crossing, Double line crossing, Loitering, Wrong way, Enter area, Leave area Support alarm triggering by specified target types (human and vehicle), People counting
Network	
Protocols	IPv4/IPv6, HTTP, RTSP/RTP/RTCP, TCP/UDP, DHCP, DNS, PPPOE, SMTP, 802.1x
Interoperability	ONVIF, CGI, SDK
Web Viewer	<IE11, Chrome, Firefox, Microsoft Edge
Web Language	English, Chinese, Polish, Italian, Portuguese, Spanish, Russian, French, Czech, Hungarian
Interface	
Network Interface	1 Ethernet (10/100 Base-T) RJ-45 Connector
Audio Interface	1ch input, 1ch output
Alarm Interface	5ch input, 1ch output
CVBS Interface	1ch (Visible)
RS485	Support
Reset Button	Built-in
SD Card Slot	Built-in Micro SD card slot, up to 256GB
General	
Power Supply	100 ~ 240 VAC
Power Consumption	Max 75 W
Working Temperature	-40°C ~ 60°C (-40°F ~ 140°F)
Storage Conditions	0~ 90% RH
Certifications	CE/FCC
Ingress Protection	IP68
Casing	SUS316L
Dimensions	530 × 350 × 395mm (20.87 × 13.78 × 15.55 inch)
Net Weight	52 kg (114.64 lb)

## Dimensions (mm)

# MoviSight

## Accessories

Optional:



MS-7BK402-SS  
Wall Mount



MS-7BK400-SS(P/F/  
D) Junction Box



MS-7CPL10A-  
SS Washing  
Tank



Flexible Tube